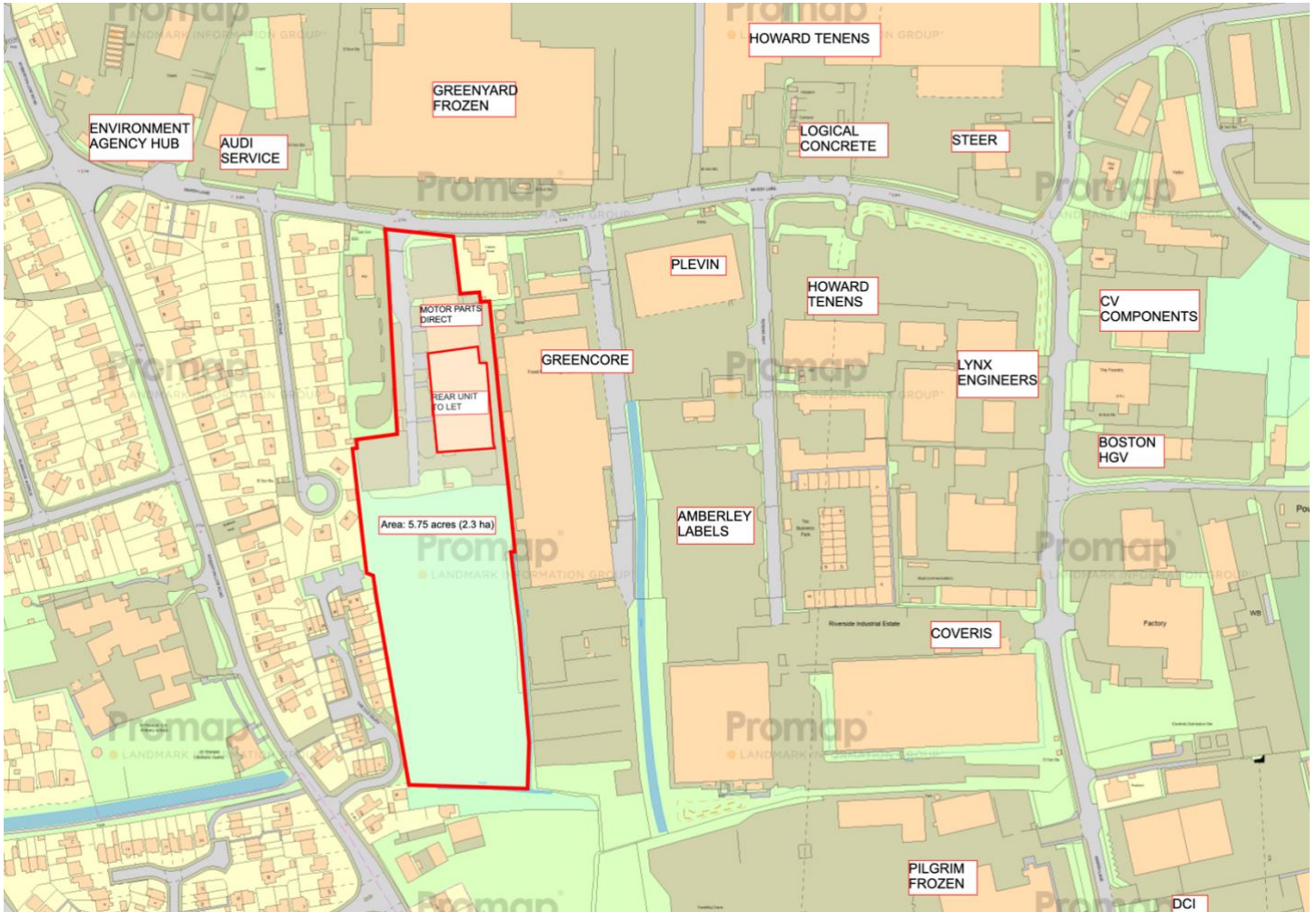


29,000sqft of High Quality Steel Warehouse Buildings, on a Site of 5.7 Acres - Part Let with Development Potential to Expand the Industrial Estate

Marsh Lane Industrial Estate | Boston | Lincolnshire | PE21 7FP



2 Large Modern Units For Sale Freehold With Vacant Possession of Part
Remainder Let to Motor Parts Direct Limited at £85,000 pa, ERV £160,000 pa
Rear Development Land Extending to 3.6 acres Suitable for Over 60,000sqft of
Trade Counter Units

For Sale Freehold with Vacant Possession of Part
£2.3 million plus VAT Subject to Contract

Location...

The market town of Boston is located on the South Lincolnshire Fens approximately 115 miles to the north of London and has a population of around 73,000 residents, a strong retail offering, good sporting facilities, a number of well-regarded schools, twice weekly market and a port.

The property is located to the south of the town on the Marsh Lane Industrial Estate close to the entrance with the main A16 trunk road connecting Boston to Peterborough and the A1 trunk road.

The site is located on the main Riverside Industrial Estate off Marsh Lane.

Description...

The site comprises modern industrial warehouse buildings at the front with undeveloped land at the rear.

The front building comprises 2 units, 1 let to Motor Parts Direct on Full Repairing and Insuring terms, the remainder being let to C F Parkinson Technology who are expanding and will vacate the building at the end of Q1 2025.

Front Unit - Motor Parts Direct

This is a steel framed building with a customer reception area, production space and offices with retail shop, production storage area.

Schedule of Accommodation

| | | |
|-------------------------|---------------------|-----------------------|
| Production Storage Area | 944m ² | 10,160ft ² |
| Ancillary Accommodation | 25m ² | 270ft ² |
| Offices Net | 44m ² | 475ft ² |
| Total | 1,014m ² | 10,900ft ² |

Rear Unit – C F Parkinson

This comprises a modern production facility with offices, steel framed construction.

Schedule of Accommodation

| | | |
|-------------------------|---------------------|-----------------------|
| Production Storage Area | 1,195m ² | 12,816ft ² |
| Canteen | 140m ² | 1,510ft ² |
| Offices Net | 274m ² | 2,950ft ² |
| Mezzanine Storage | 482m ² | 5185ft ² |
| Footprint | 1,650m ² | 17,760ft ² |

In the front of the units is parking and a communal road leading to the rear.



Rear Development Land

To the rear of the existing buildings and parking there is further industrial land extending to an additional 3.6 acres, 1.46 hectares.

A sketch scheme has been completed showing an additional 3,810sqm, 41,000sqft of industrial trade counter units and currently being allocated in the Local Plan for industrial development.

The design shown incorporates 4 rows of terraced units, the units extending to 2,280sqft, 211sqm of accommodation with 6m internal eaves, roller shutter doors, insulated cladding panels, kitchenette, office and WC.

Tenure...

The property is available freehold subject to an occupational lease by Motor Parts Direct Limited and the remains of the occupancy of C F Parkinson who are hoping to vacate the site at the end of Q1 2025. The passing rent is £85,000 pa with an ERV of £160,000 pa excluding the potential income for the storage land.

EPC...

Where required, EPCs will be available on request.

Viewing...

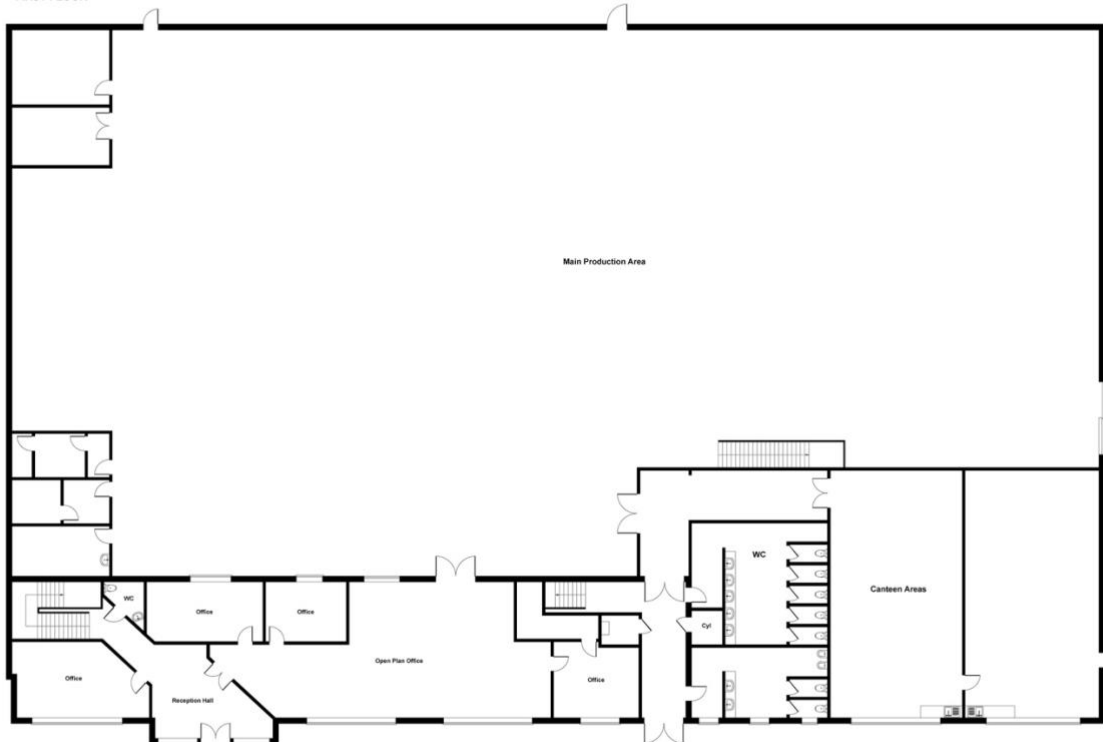
All viewings are to be made by appointment through the agent. Poyntons Consultancy.
sales@poyntons.com | poyntons.com



Rear Unit Marsh Lane



FIRST FLOOR

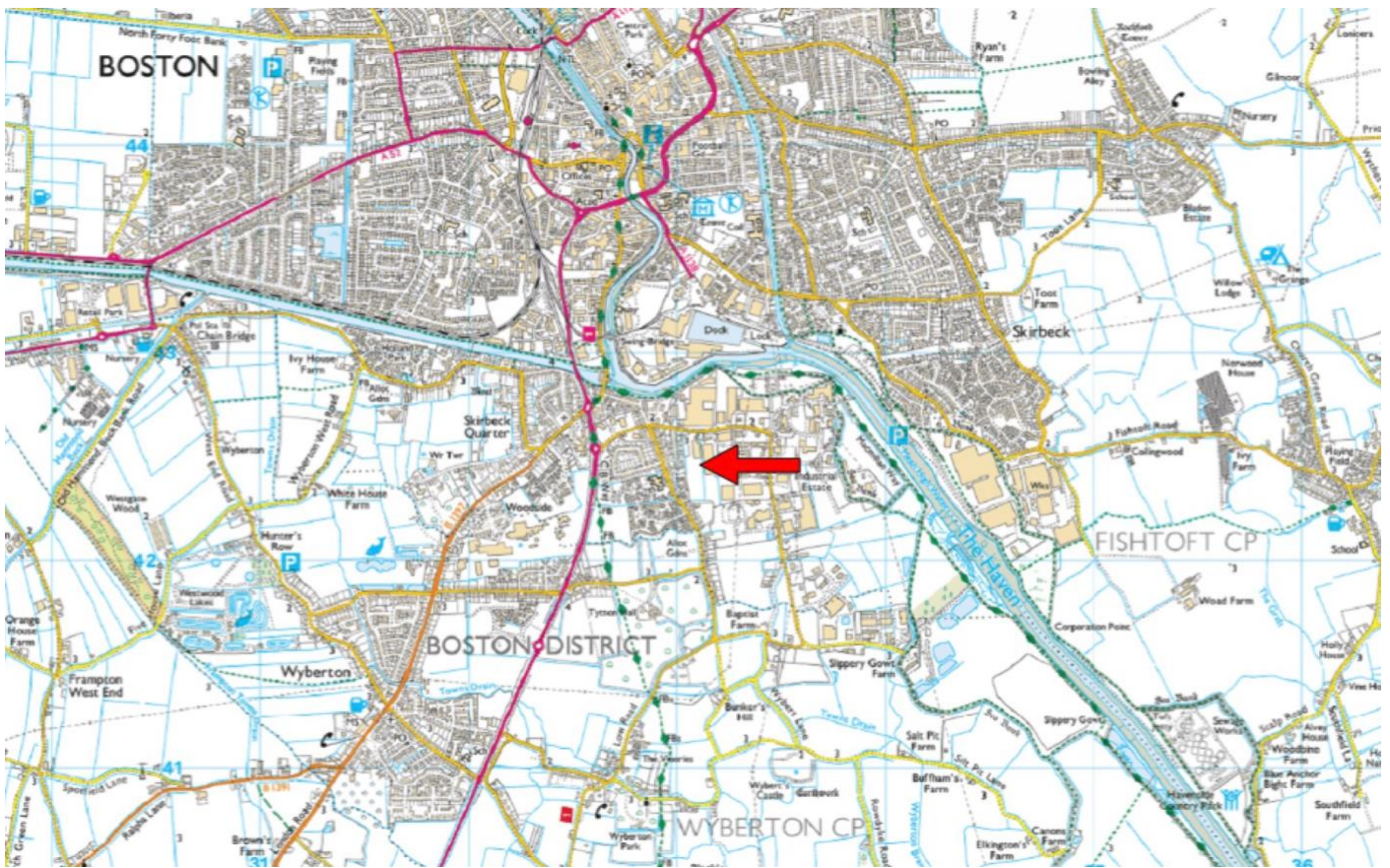


GROUND FLOOR

Not to Scale. Produced by The Plan Portal 2024
For Illustrative Purposes Only.

Rear Development Land





Misrepresentation Act: The particulars in this brochure have been produced in good faith, are set out as a general guide and do not constitute the whole or part of any contract. All liability, in negligence or otherwise, arising from the use of the particulars is hereby excluded. **Money Laundering Regulations:** Prospective purchasers will be asked to produce identification at a later stage.

poyntons consultancy

PROPERTY MARKETING SPECIALISTS

01205 361694

www.poyntons.com

sales@poyntons.com



RICS